

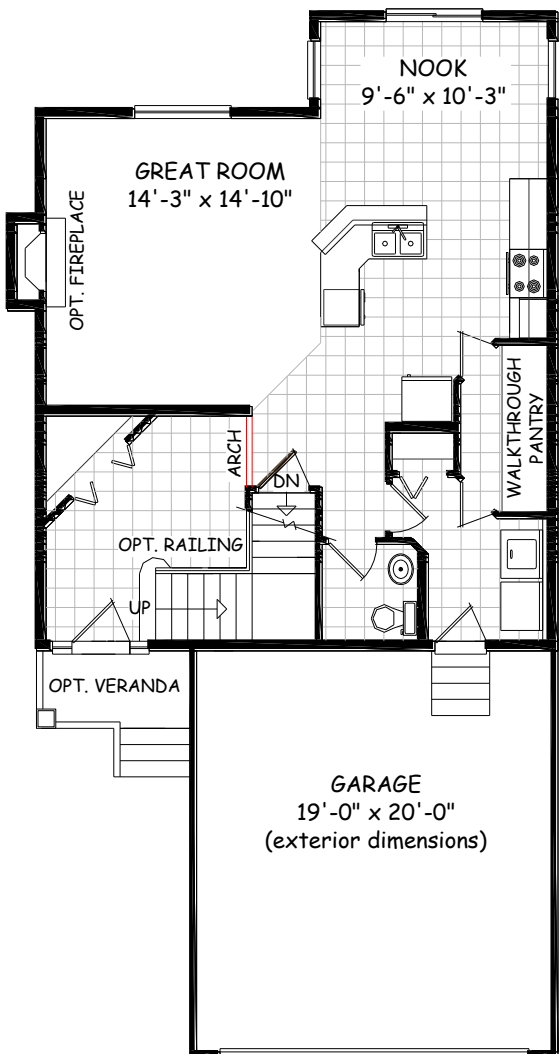


DOUGLAS HOMES

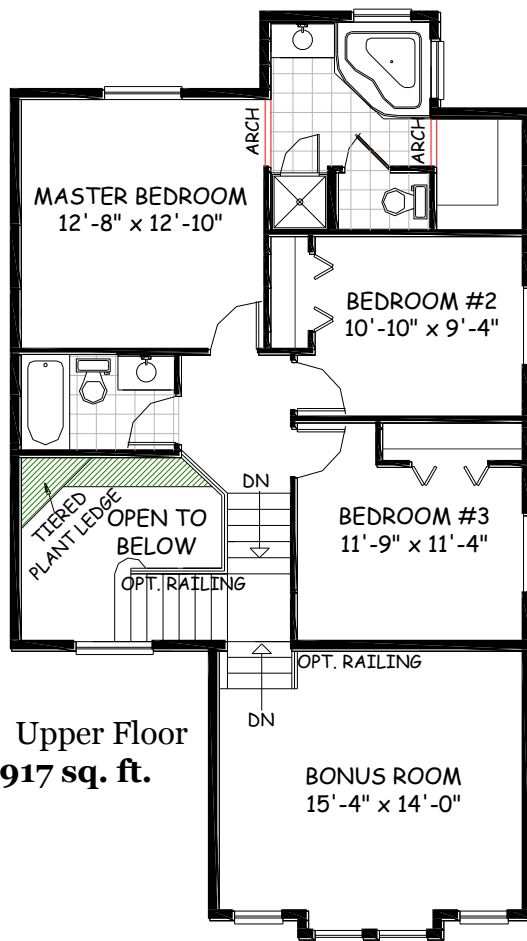
MASTER BUILDER

DAYTONA BEACH 5

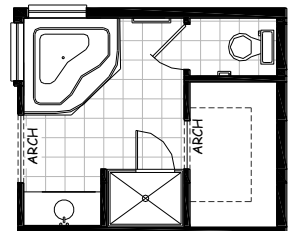
1744 sq. ft.



Main Floor
827 sq. ft.



Upper Floor
917 sq. ft.



Opt. Ensuite
+24 sq. ft.

27.04-10.54

- Kitchen, nook and family room combine to create a great room effect
- Large 4-piece ensuite and walk-in closet in master suite
- Walk-through pantry
- Appealing foyer open to above with 2-story ceilings
- Spacious kitchen with island and raised eating bar



douglashomes.net ph: 403-717-0505

Artist's representation, may not be exactly as shown — all dimensions are approximate
All designs and plans are the exclusive property of Douglas Homes Ltd.

