

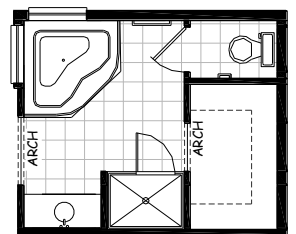
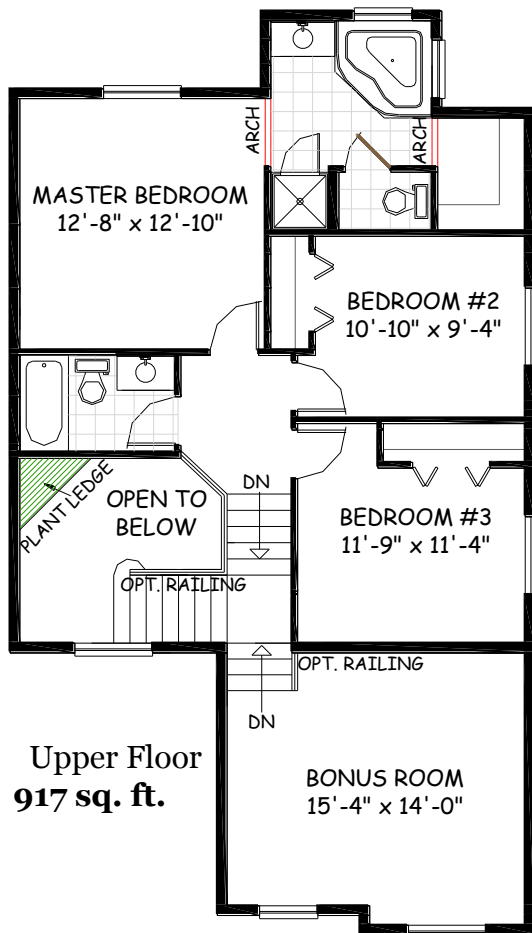
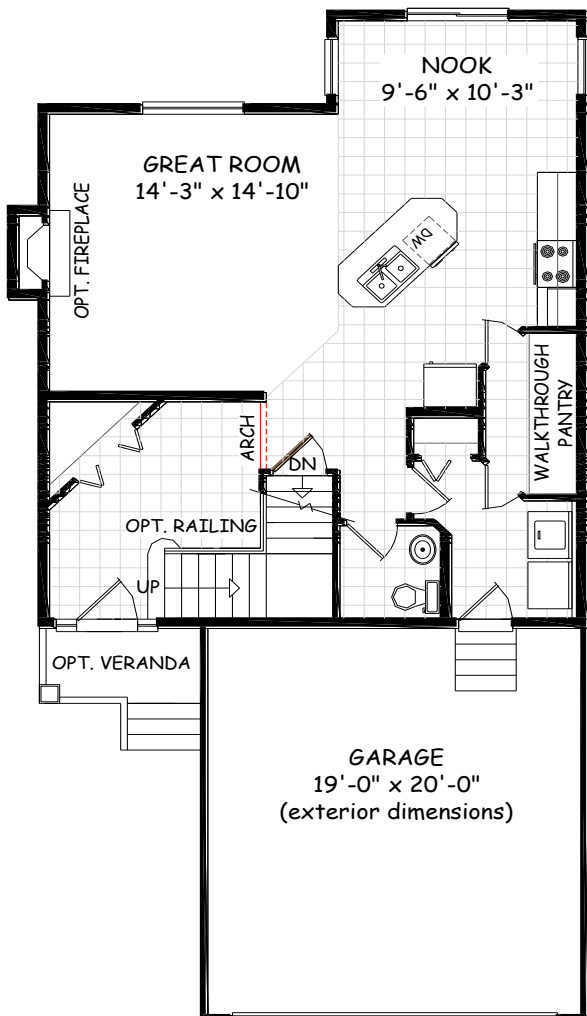


DOUGLAS HOMES

MASTER BUILDER

DAYTONA BEACH 5

1744 sq. ft.



Opt. Ensuite
+24 sq. ft.

27.10-09.54

- Kitchen, nook and family room combine to create a great room effect
- Large 4-piece ensuite and walk-in closet in master suite
- Walk-through pantry
- Appealing foyer open to above with 2-story ceilings
- Spacious kitchen with generous island
- Bonus room is perfect for a number of uses



douglashomes.net ph: 403-717-0505

Artist's representation, may not be exactly as shown — all dimensions are approximate
All designs and plans are the exclusive property of Douglas Homes Ltd.

