



DOUGLAS HOMES

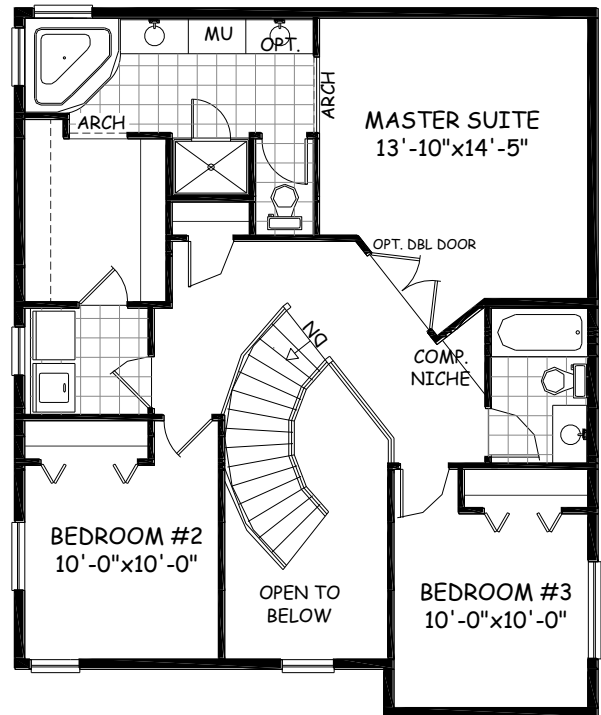
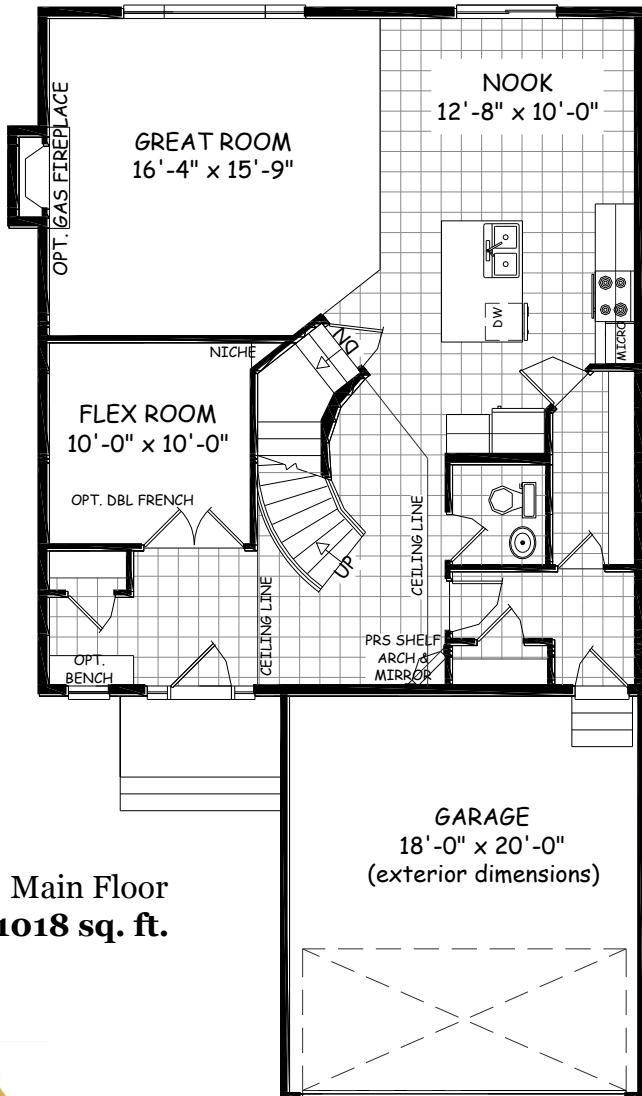
MASTER BUILDER

MYKANOS

1937 sq. ft.



3rd garage bay opt.



30.08-09.54

- Stunning curved staircase in foyer
- Large 4 piece ensuite with optional double sink
- Huge walk-in closet in master bedroom is conveniently attached to the upper floor laundry
- Spacious kitchen with oversized island opens to massive great room
- Convenient walk-through pantry and flex room

